

# St. Albans Shopping Center

**Available Space:** 1,310 +/- SF

**Rent:** \$15.00/SF, NNN

Bank Site / Stand-alone building with drive-thru

Current tenants include:

- Rite Aid
- US Post Office
- Planet Fitness
- 14<sup>th</sup> Star Brewing Co.
- Dollar Tree
- Sherwin Williams
- Feldman's Bagels
- Chinese Restaurant

For additional information contact:

**Brian Waxler**

O: (802) 863 – 8210 ext. 22

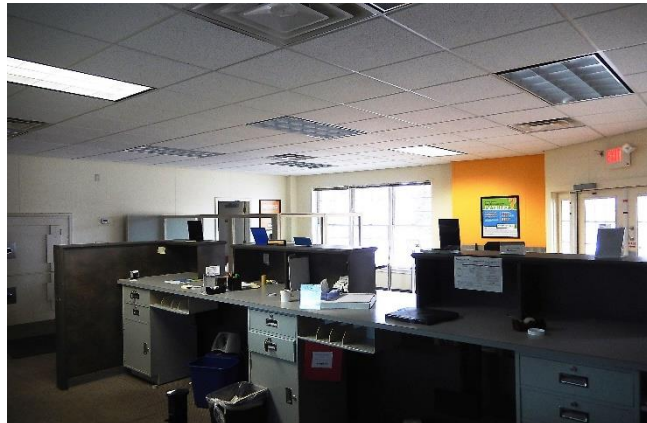
[bwaxler@vermontrealestate.com](mailto:bwaxler@vermontrealestate.com)

**Pomerleau Real Estate**

69 College Street

Burlington VT, 05401

[www.vermontrealestate.com](http://www.vermontrealestate.com)





**Available Space:** 1,310 +/- SF

**Rent:** \$15.00/SF, NNN

For additional information contact:

**Brian Waxler**

O: (802) 863 – 8210 ext. 22

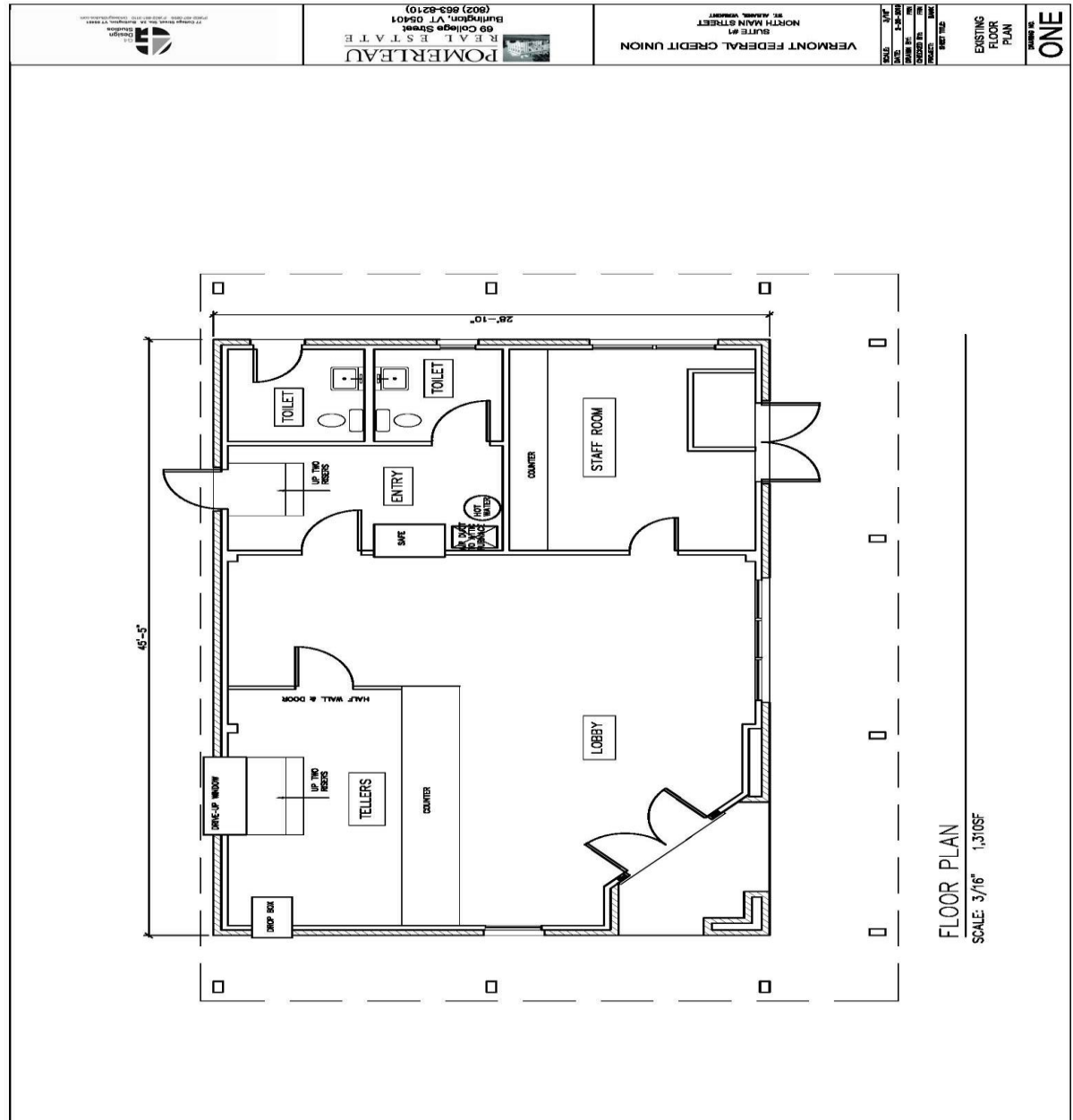
[bwaxler@vermontrealestate.com](mailto:bwaxler@vermontrealestate.com)

**Pomerleau Real Estate**

69 College Street

Burlington VT, 05401

[www.vermontrealestate.com](http://www.vermontrealestate.com)



Information herein is believed to be accurate, but is not warranted. All figures and information should be independently confirmed. This flyer is not a legally binding offer to sell or lease property. Pomerleau Real Estate represents the owner in this transaction.





**Available Space:** 1,310 +/- SF

**Rent:** \$15.00/SF, NNN

For additional information contact:

**Brian Waxler**

O: (802) 863 – 8210 ext. 22

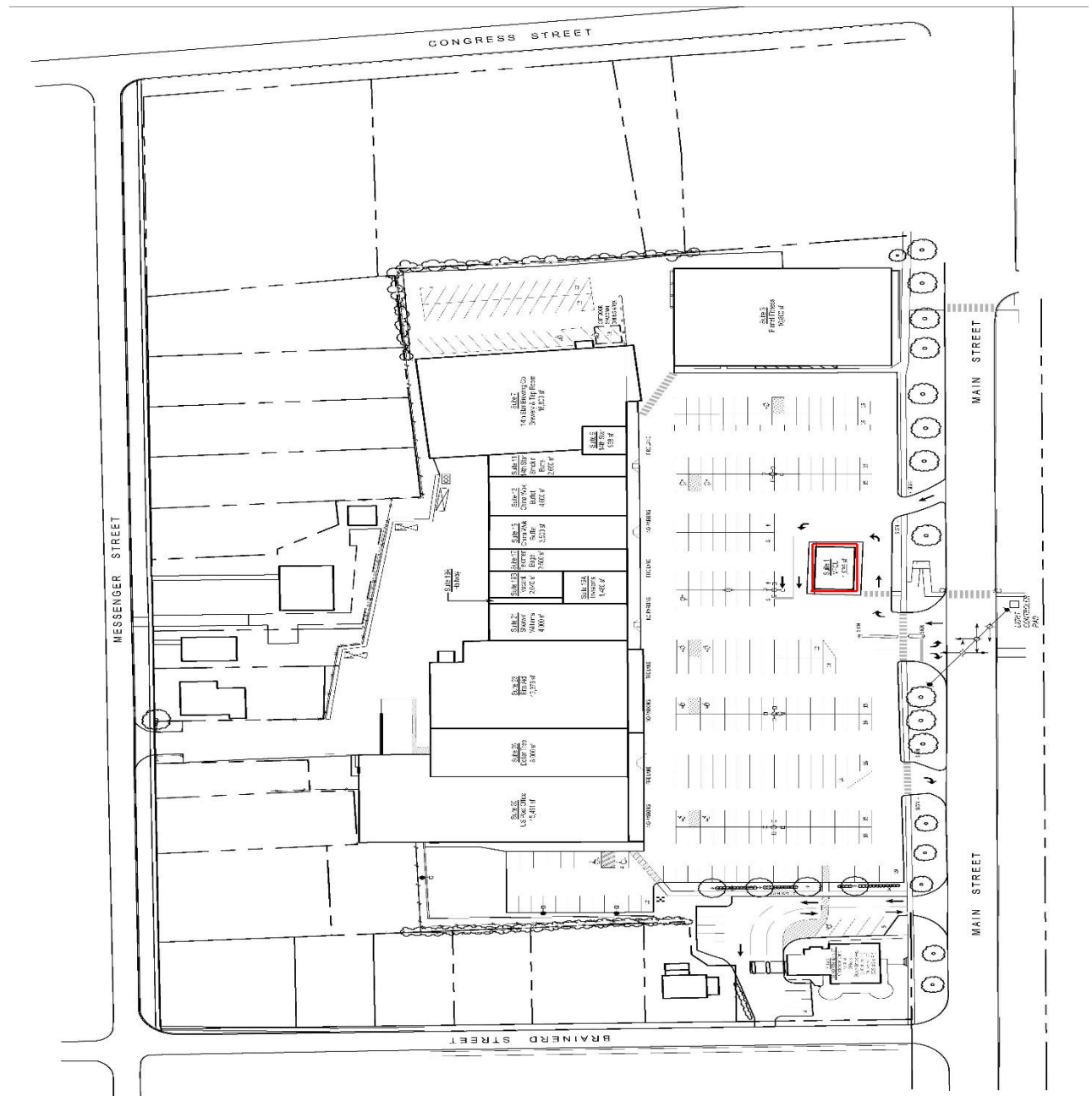
[bwaxler@vermontrealestate.com](mailto:bwaxler@vermontrealestate.com)

**Pomerleau Real Estate**

69 College Street

Burlington VT, 05401

[www.vermontrealestate.com](http://www.vermontrealestate.com)



Information herein is believed to be accurate, but is not warranted. All figures and information should be independently confirmed. This flyer is not a legally binding offer to sell or lease property. Pomerleau Real Estate represents the owner in this transaction.