



Laurel Hill Building

4 Laurel Hill Drive, South Burlington, VT

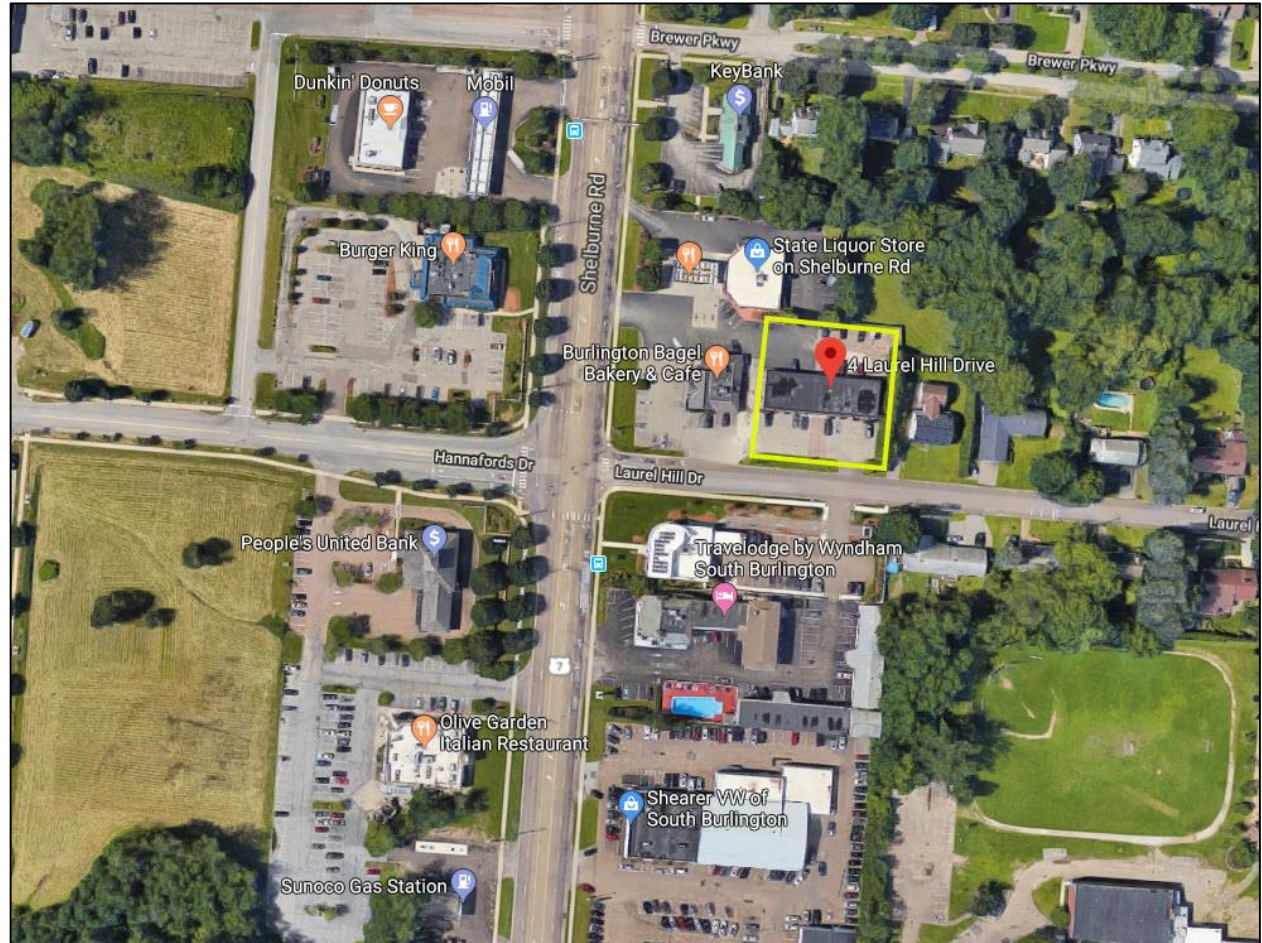
POMERLEAU
— REAL ESTATE —





Available Space

- First Floor - Suite 1
 - 2,300 SF
 - Multiple Offices, Conference Room, Small Kitchenette
 - Available June 1st, 2019
 - \$3,000/m (gross + utilities)
- First Floor - Suite 2
 - 2,300 SF
 - Bathroom in Suite
 - Currently configured with exam rooms, ideal for dental/medical use
 - Available August 1st, 2019
 - \$3,000/m (gross + utilities)
- Second Floor – Suite 4
 - 1,150 SF
 - Small professional office
 - \$1,000/m (gross)
 - Available Immediately



The Laurel Hill Building is extremely well located less than a quarter mile from the I-189 onramp just off Shelburne Road in South Burlington. The building is 9,888 SF in size and features ample parking both behind and in front of the building. The first floor is divided into two suites of equal size (2,300 SF) while the second floor has a mix of smaller offices ranging from 1,900 SF to 1,100 SF.

Laurel Hill Building

4 Laurel Hill Drive, South Burlington, VT

POMERLEAU
— REAL ESTATE —



For more information contact:

Michael Biama

Commercial Brokerage

Office: 802.863.8210

mbiama@vermontrealestate.com

Yves Bradley

Commercial Brokerage

Office: 802.863.8210

ybradley@vermontrealestate.com

