

Newport Shopping Center

Waterfront Plaza, Newport VT



AVAILABLE FOR LEASE:

PLAZA SIZE: 86,782 +/- SF

SPACES FOR LEASE:

Suite 2: Up to 16,437 sf

Suite 9: Up to 7,255 sf

PRICE: \$10.00 sf NNN (\$3.31/sf)

HIGHLIGHTS:

Opportunity awaits in the historic and beautiful town of Newport, VT! Newport Plaza is conveniently located right off I91, in the heart of town. Less than 15 minutes from Canadian border, the plaza is heavily trafficked from both native and international tourists.

Current tenants include: Wendy's, Vista Foods, The Great Outdoors, Hoagies Pizza, The T Bar and more.



Madeline Richards

O: 802 992 9049

M: 802 578 6594

mrichards@vermontrealestate.com


vermontrealestate.com

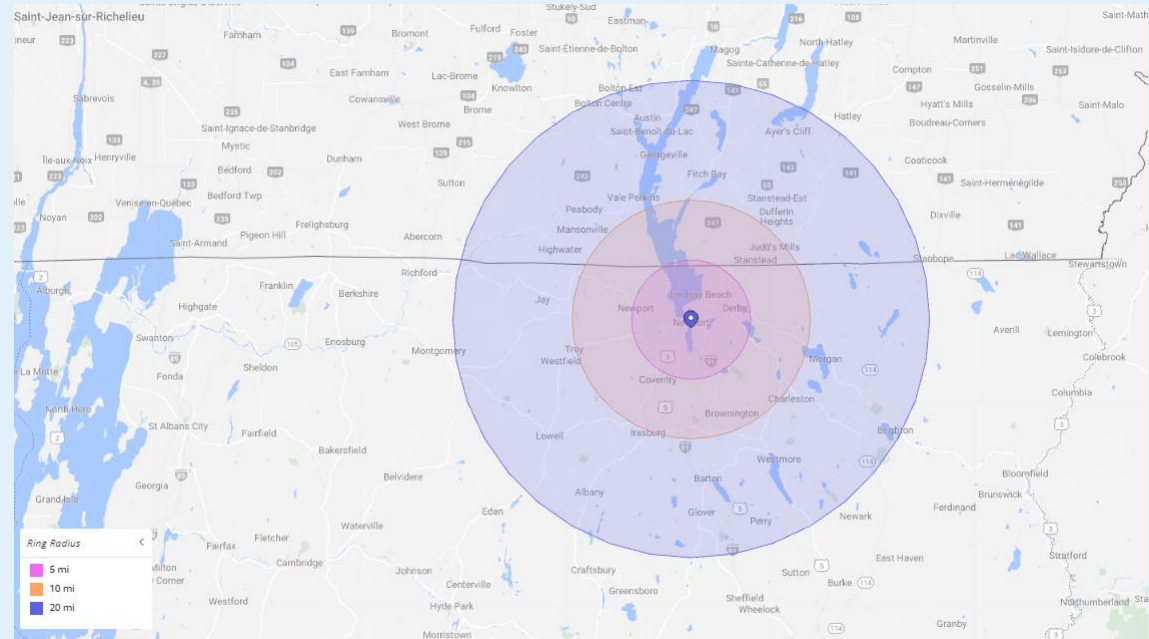
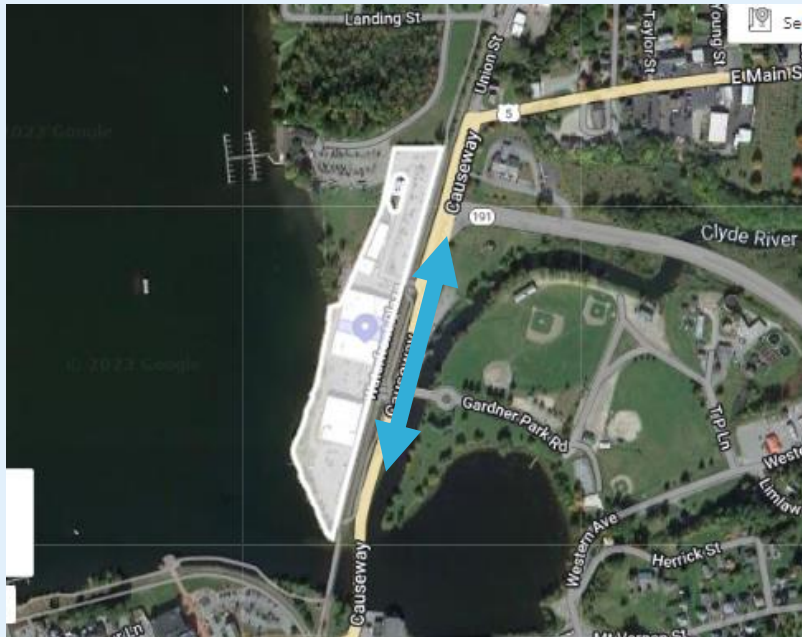
COMMERCIAL BROKERAGE | DEVELOPMENT | PROPERTY MANAGEMENT

Newport Shopping Center

Waterfront Plaza, Newport VT

AVAILABLE FOR LEASE:

Traffic Count	 = 9,114
Avg Weekly Visits	4,217



	5 miles	10 miles	20 miles
Population	9,100	17,218	26,110
Households	3,799	7,267	11,210
Avg Household Income	\$61,945	\$57,861	\$57,676

*Information provided by  Placer.ai

Madeline Richards

O: 802 992 9049

M: 802 578 6594

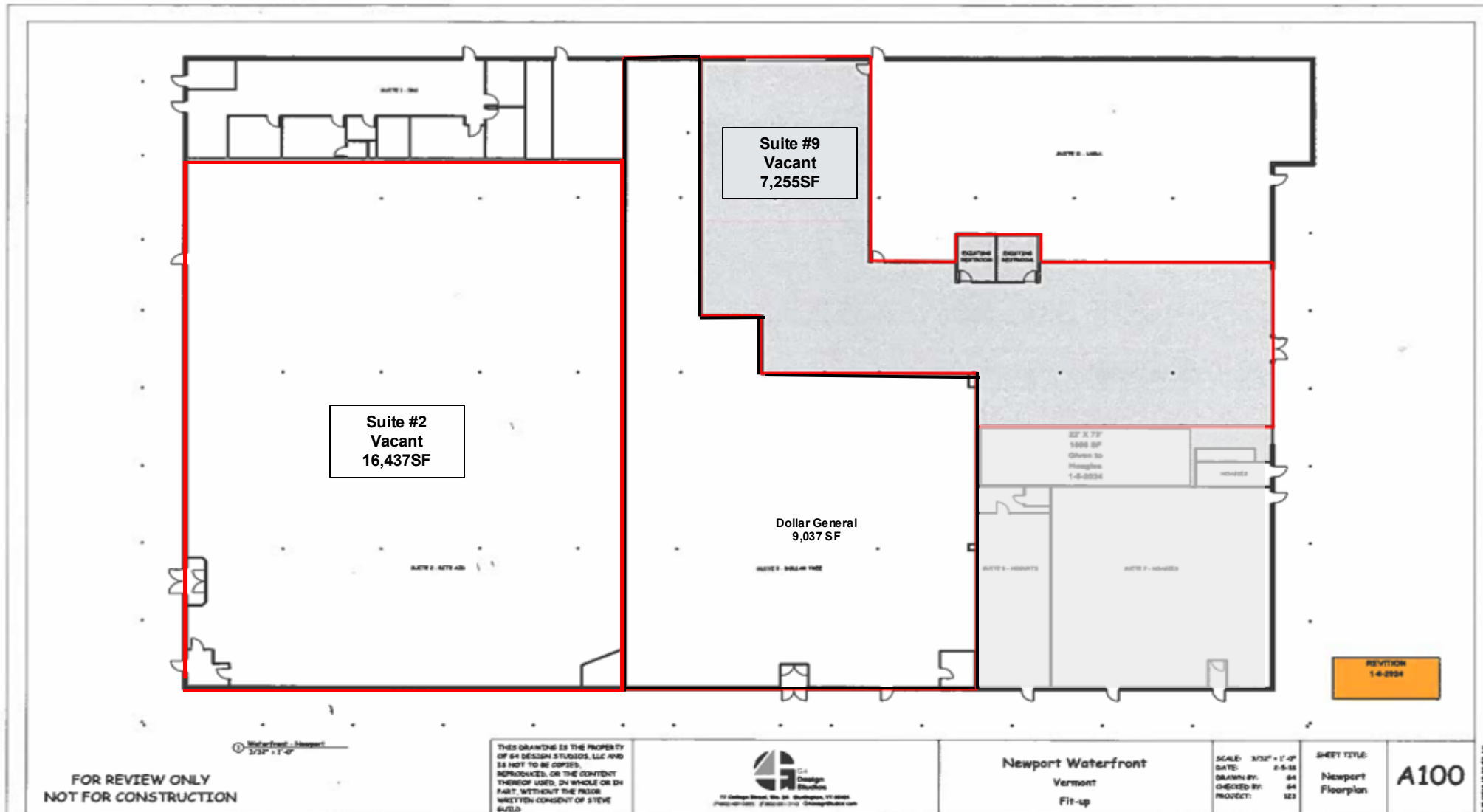
mrichards@vermontrealestate.com

vermontrealestate.com

COMMERCIAL BROKERAGE | DEVELOPMENT | PROPERTY MANAGEMENT

Newport Shopping Plaza

Newport, Vermont



Madeline Richards

O: 802 992 9049

M: 802 578 6594

mrichards@vermontrealestate.com

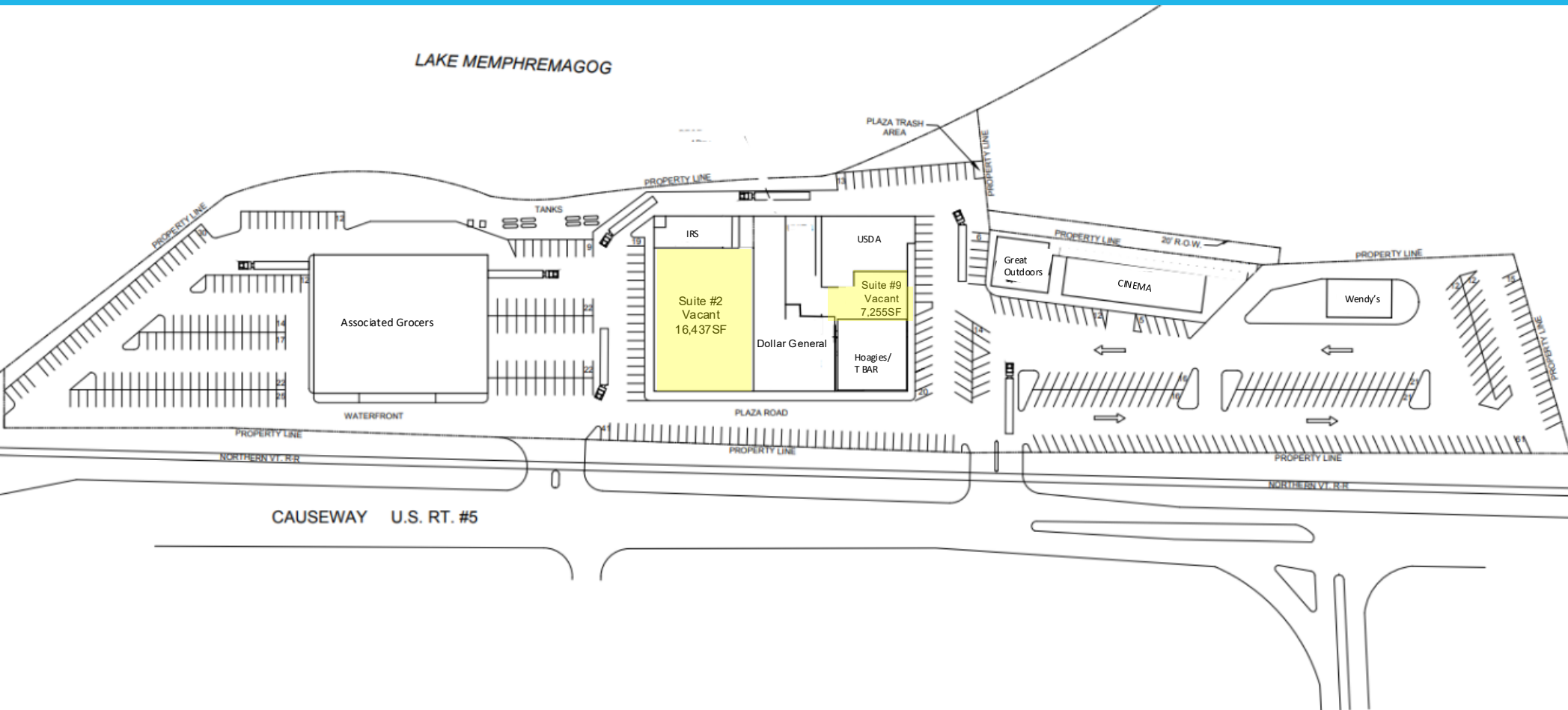
vermontrealestate.com

COMMERCIAL BROKERAGE | DEVELOPMENT | PROPERTY MANAGEMENT

Newport Shopping Plaza

Newport, Vermont

POMERLEAU
REAL ESTATE



Madeline Richards

O: 802 992 9049

M: 802 578 6594

mrichards@vermontrealestate.com

vermontrealestate.com

COMMERCIAL BROKERAGE | DEVELOPMENT | PROPERTY MANAGEMENT