

# Newport Shopping Center

117 Waterfront Plaza, Newport, VT



## AVAILABLE FOR LEASE:

**PLAZA SIZE:** 86,782 +/- SF

### SPACES FOR LEASE:

**Suite 2:** Up to 16,437 sf

**Suite 9:** Up to 7,255 sf

**PRICE:** \$10.00 sf NNN (\$3.31/sf)

### HIGHLIGHTS:

Opportunity awaits in the historic and beautiful town of Newport, VT! Newport Plaza is conveniently located right off I91, in the heart of town. Less than 15 minutes from Canadian border, the plaza is heavily trafficked from both native and international tourists.

Current tenants include: Wendy's, Vista Foods, The Great Outdoors, Hoagies Pizza, The T Bar and more.



**Madeline Richards**

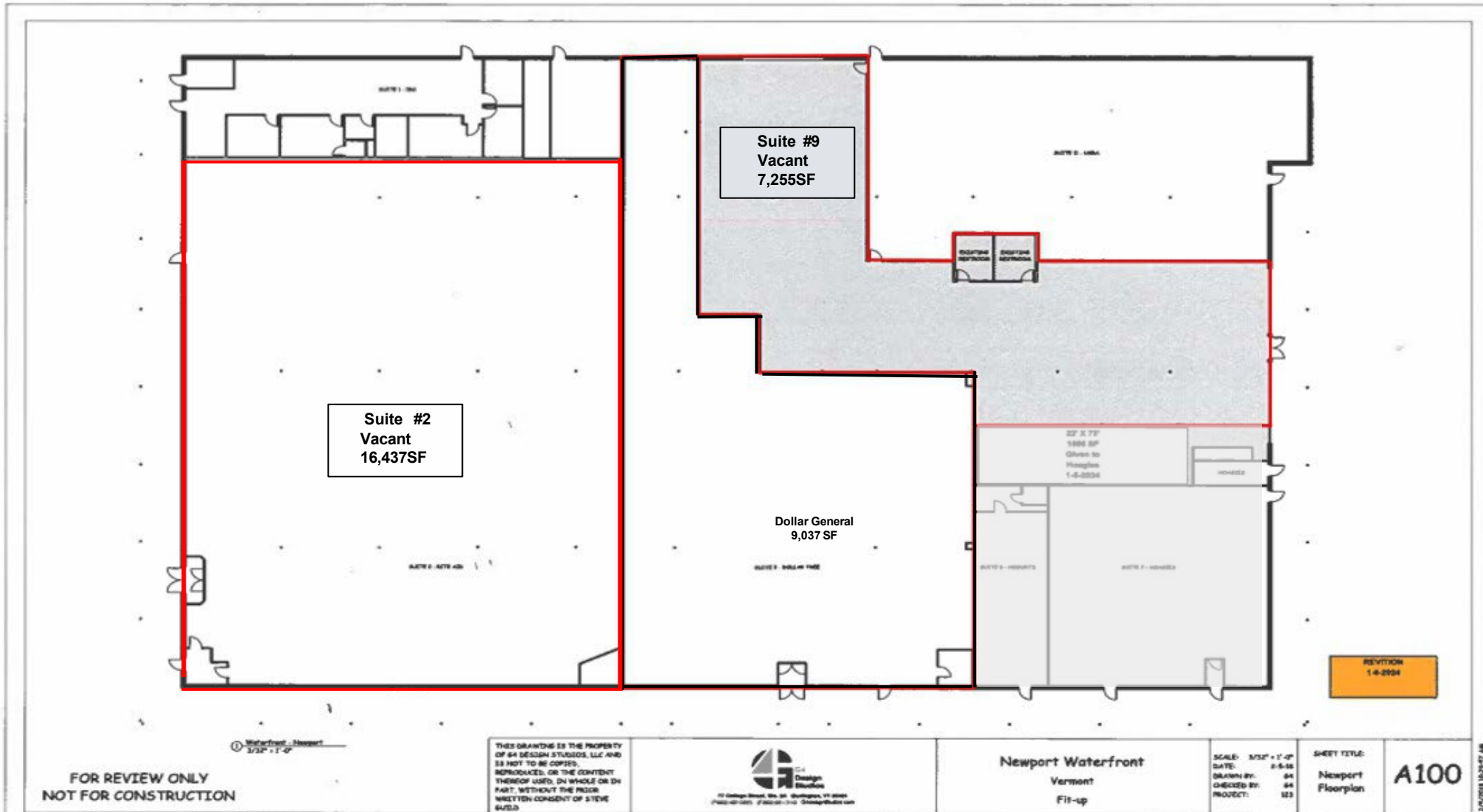
**O:** 802 992 9049

**M:** 802 578 6594

[mrichards@vermontrealestate.com](mailto:mrichards@vermontrealestate.com)

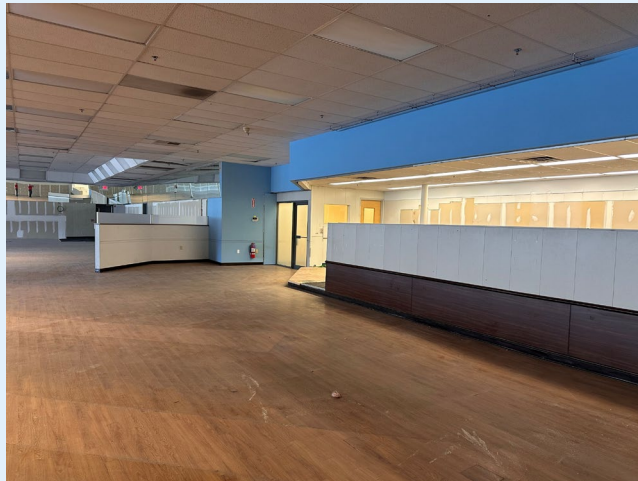
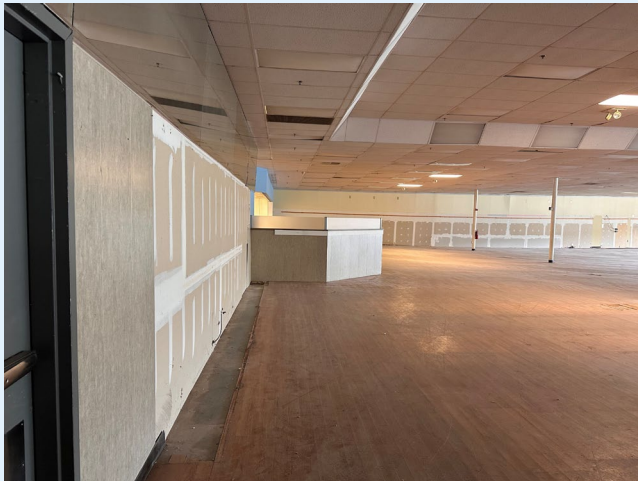
[vermontrealestate.com](http://vermontrealestate.com)

COMMERCIAL BROKERAGE | DEVELOPMENT | PROPERTY MANAGEMENT



# Newport Shopping Plaza

Suite 2



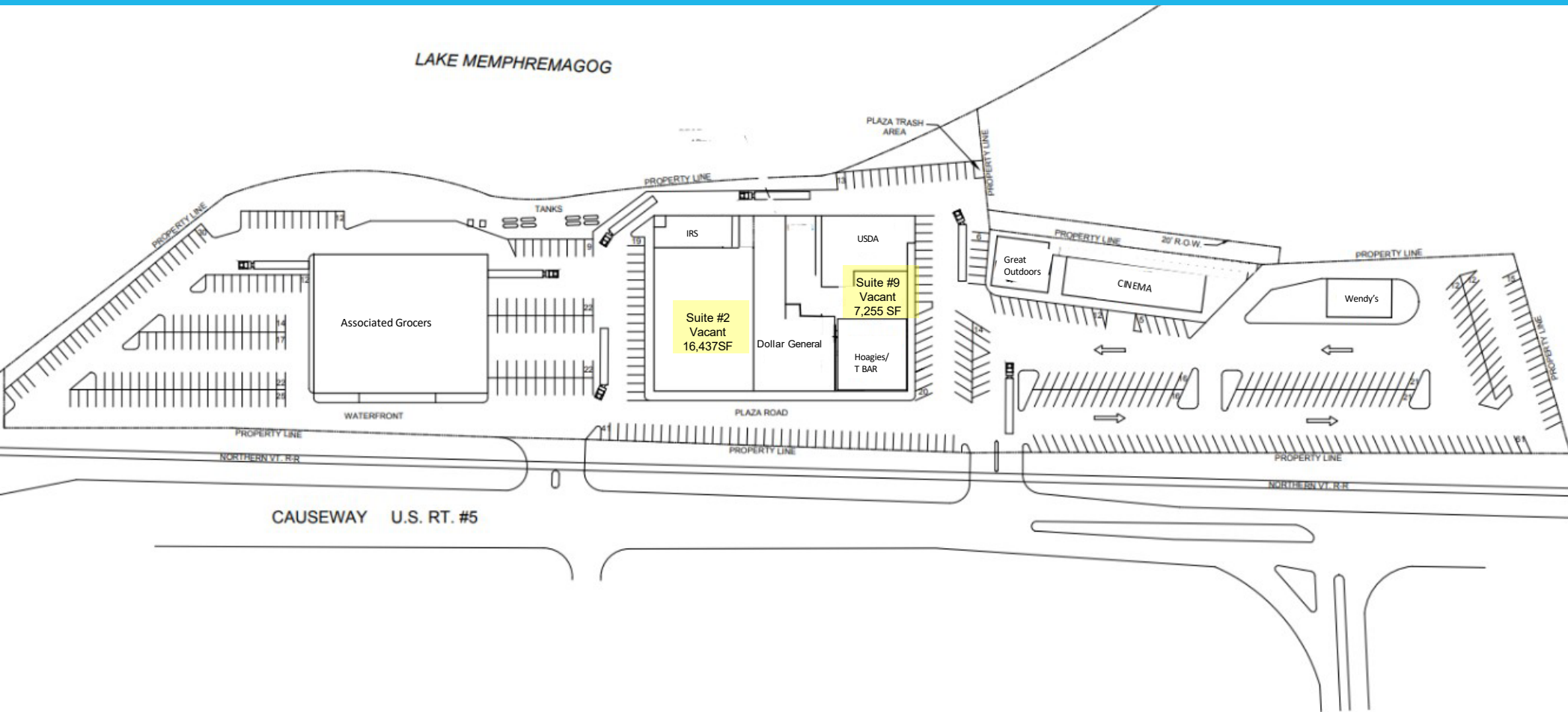
# Newport Shopping Plaza

Suite 9



# Newport Shopping Plaza

Newport, Vermont



Madeline Richards

O: 802 992 9049

M: 802 578 6594

[mrichards@vermontrealestate.com](mailto:mrichards@vermontrealestate.com)

[vermontrealestate.com](http://vermontrealestate.com)

COMMERCIAL BROKERAGE | DEVELOPMENT | PROPERTY MANAGEMENT

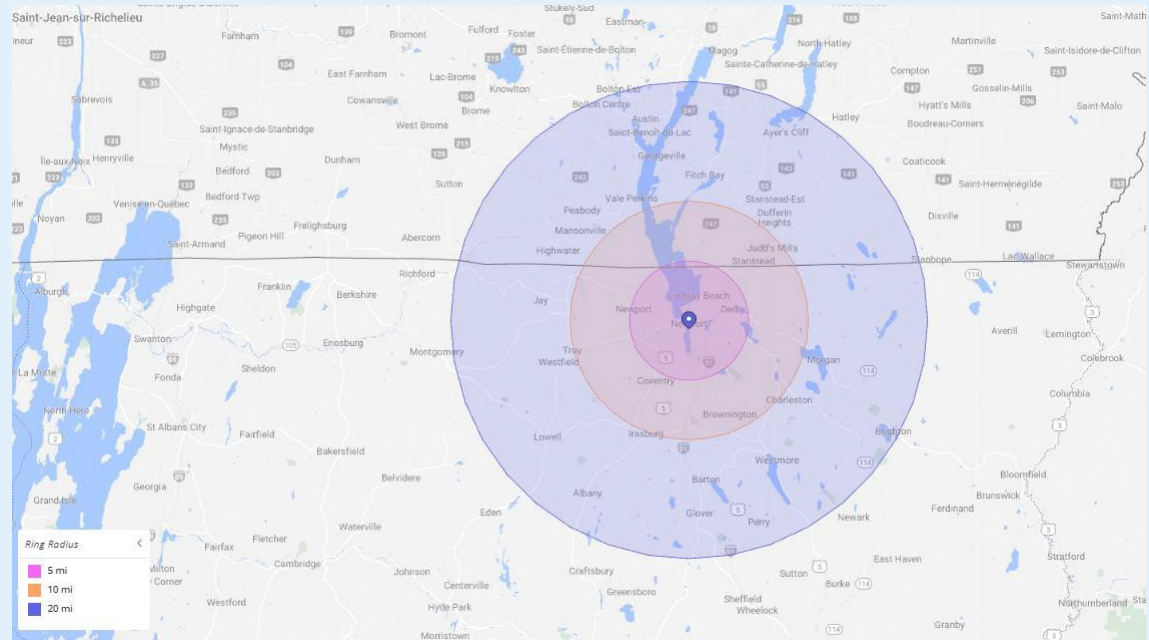
# Newport Shopping Center

Waterfront Plaza, Newport VT

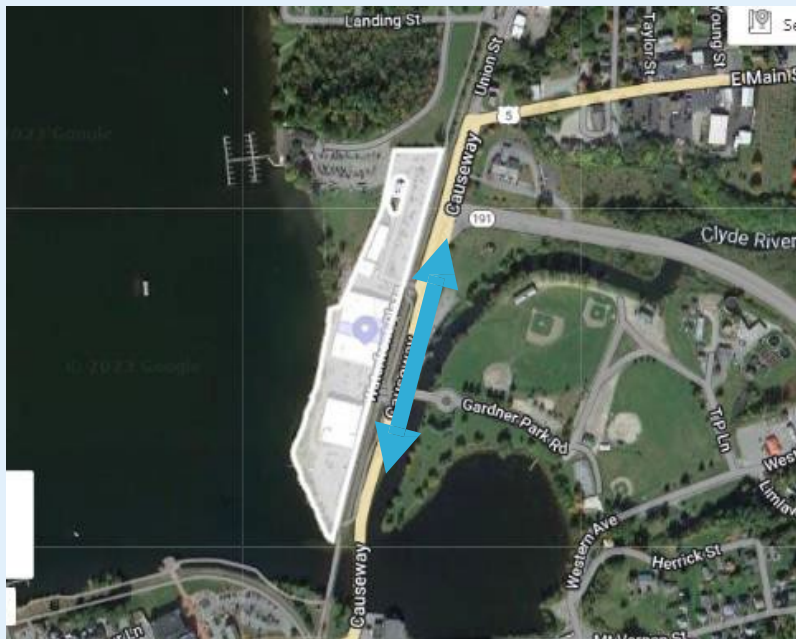


## AVAILABLE FOR LEASE:

Traffic Count	= 9,114
Avg Weekly Visits	4,217



	5 miles	10 miles	20 miles
Population	9,100	17,218	26,110
Households	3,799	7,267	11,210
Avg Household Income	\$61,945	\$57,861	\$57,676



\*Information provided by Placer.ai



**Madeline Richards**

**O: 802 992 9049**

**M: 802 578 6594**

**[mrichards@vermontrealestate.com](mailto:mrichards@vermontrealestate.com)**

**[vermontrealestate.com](http://vermontrealestate.com)**

COMMERCIAL BROKERAGE | DEVELOPMENT | PROPERTY MANAGEMENT