



One Lawson Lane, Suite 300 Burlington, VT

Available Space: 1,700 +/- SF

For Lease: \$2,690/ month + utilities

Highlights:

- Unique third floor space with four private offices
- Includes a large reception area
- Great natural light, and beautiful built-in shelving
- Private and quiet setting!
- Single vacant office adjacent adding 300 SF also available if needed!

For additional information contact:

Kendra Kenney

Commercial Brokerage

Office: 802.863.8218

Cell : 508.479.8761

Fax: 802.863.8219

kkenney@vermontrealestate.com

www.vermontrealestate.com



INFORMATION HEREIN IS BELIEVED TO BE ACCURATE BUT IS NOT WARRANTED. ALL FIGURES AND INFORMATION SHOULD BE INDEPENDENTLY CONFIRMED. THIS FLYER IS NOT A LEGALLY BINDING OFFER TO SELL OR LEASE PROPERTY. PLEASE SEEK COMPETENT LEGAL AND FINANCIAL ADVICE. POMERLEAU REAL ESTATE REPRESENTS THE OWNER IN THIS TRANSACTION.



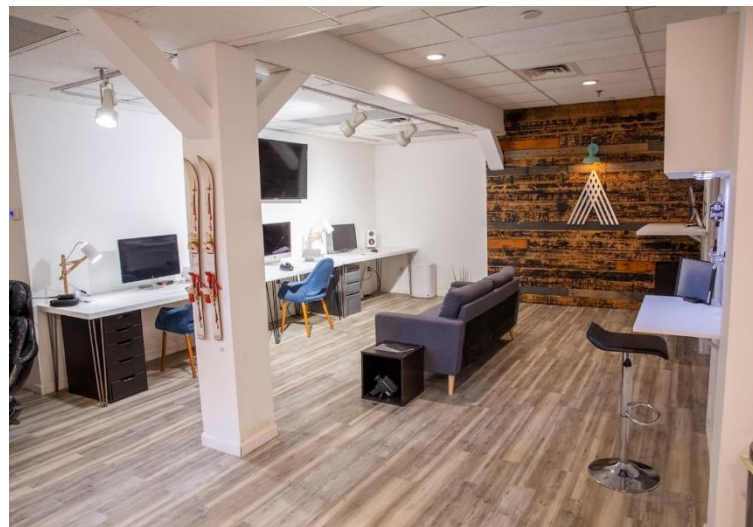
One Lawson Lane, Suite 120 Burlington, VT

Available Space: 850 SF

For Lease: \$1,200/month

Highlights:

- Private and quiet setting!
- Heat and electric included in rent!



For additional information contact:

Kendra Kenney

Commercial Brokerage

Office: 802.863.8218

Cell : 508.479.8761

Fax: 802.863.8219

kkenney@vermontrealestate.com

www.vermontrealestate.com

INFORMATION HEREIN IS BELIEVED TO BE ACCURATE BUT IS NOT WARRANTED. ALL FIGURES AND INFORMATION SHOULD BE INDEPENDENTLY CONFIRMED. THIS FLYER IS NOT A LEGALLY BINDING OFFER TO SELL OR LEASE PROPERTY. PLEASE SEEK COMPETENT LEGAL AND FINANCIAL ADVICE. POMERLEAU REAL ESTATE REPRESENTS THE OWNER IN THIS TRANSACTION.

In partnership with: **SITE SOURCE**
RETAIL BROKER NETWORK



One Lawson Lane, Suite 200 Burlington, VT

Available Space: Various single offices

For Lease: \$400-\$650/ per office

Highlights:

- Single offices in second floor executive suite
- 3 Single offices currently available
- Suite offers shared waiting area, kitchenette, and conference room
- Private and quiet setting!

For additional information contact:

Kendra Kenney

Commercial Brokerage

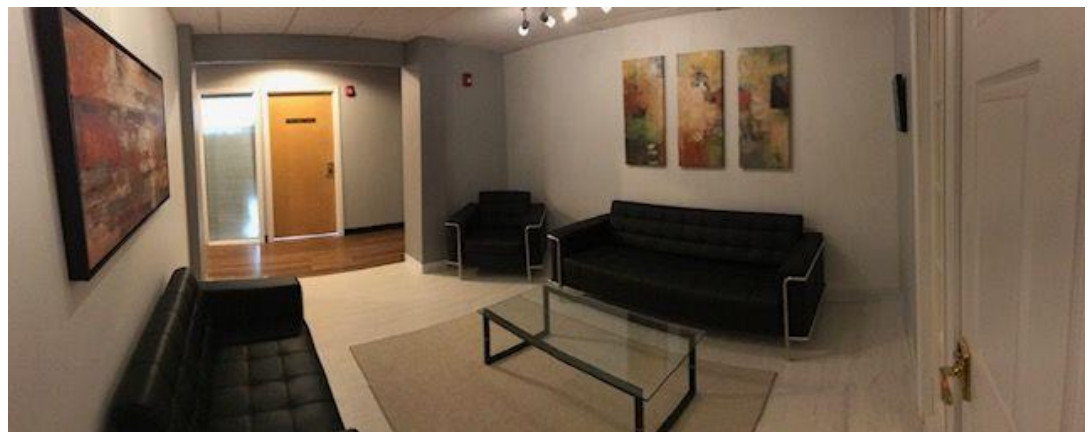
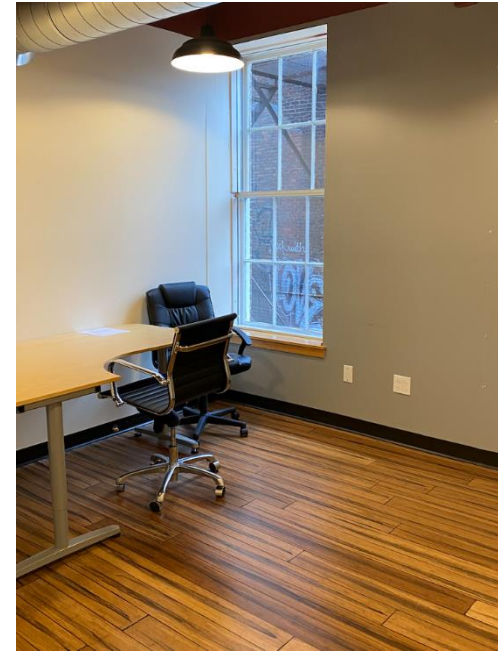
Office: 802.863.8218

Cell : 508.479.8761

Fax: 802.863.8219

kkenney@vermontrealestate.com

www.vermontrealestate.com



INFORMATION HEREIN IS BELIEVED TO BE ACCURATE BUT IS NOT WARRANTED. ALL FIGURES AND INFORMATION SHOULD BE INDEPENDENTLY CONFIRMED. THIS FLYER IS NOT A LEGALLY BINDING OFFER TO SELL OR LEASE PROPERTY. PLEASE SEEK COMPETENT LEGAL AND FINANCIAL ADVICE. POMERLEAU REAL ESTATE REPRESENTS THE OWNER IN THIS TRANSACTION.



One Lawson Lane, Suite 320

Burlington, VT

Available Space: 1,750 +/- sf

For Lease: \$22.00/SF + utilities

Highlights:

- Lake Views!
- Conveniently located just one block from Church Street
- Third floor suite
- Space features great natural light and beautiful wood floors
- Available March 1, 2022

For additional information contact:

Kendra Kenney

Commercial Brokerage

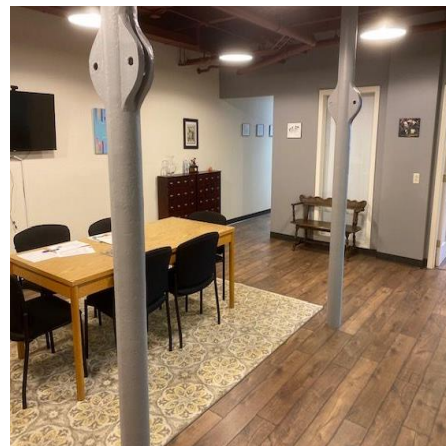
Office: 802.863.8218

Cell : 508.479.8761

Fax: 802.863.8219

kkenney@vermontrealestate.com

www.vermontrealestate.com



INFORMATION HEREIN IS BELIEVED TO BE ACCURATE BUT IS NOT WARRANTED. ALL FIGURES AND INFORMATION SHOULD BE INDEPENDENTLY CONFIRMED. THIS FLYER IS NOT A LEGALLY BINDING OFFER TO SELL OR LEASE PROPERTY. PLEASE SEEK COMPETENT LEGAL AND FINANCIAL ADVICE. POMERLEAU REAL ESTATE REPRESENTS THE OWNER IN THIS TRANSACTION.