



# One Lawson Lane, Suite 300 Burlington, VT

Available Space: 1,700 +/- SF

For Lease: \$2,690/ month + utilities

## Highlights:

- Unique third floor space with four private offices
- Includes a large reception area
- Great natural light, and beautiful built-in shelving
- Private and quiet setting!
- Single vacant office adjacent adding 300 SF also available if needed!

For additional information contact:

**Kendra Kenney**

Commercial Brokerage

Office: 802.863.8218

Cell : 508.479.8761

Fax: 802.863.8219

[kkenney@vermontrealestate.com](mailto:kkenney@vermontrealestate.com)

[www.vermontrealestate.com](http://www.vermontrealestate.com)



INFORMATION HEREIN IS BELIEVED TO BE ACCURATE BUT IS NOT WARRANTED. ALL FIGURES AND INFORMATION SHOULD BE INDEPENDENTLY CONFIRMED. THIS FLYER IS NOT A LEGALLY BINDING OFFER TO SELL OR LEASE PROPERTY. PLEASE SEEK COMPETENT LEGAL AND FINANCIAL ADVICE. POMERLEAU REAL ESTATE REPRESENTS THE OWNER IN THIS TRANSACTION.



# One Lawson Lane, Suite 230 Burlington, VT

Available Space: 1,000 SF

For Lease: \$1,833/month

## Highlights:

- Single office on the second-floor executive suite
- Great natural light, one large private office and open space
- Private and quiet setting!
- Heat and electric included in rent!

For additional information contact:

**Kendra Kenney**

Commercial Brokerage

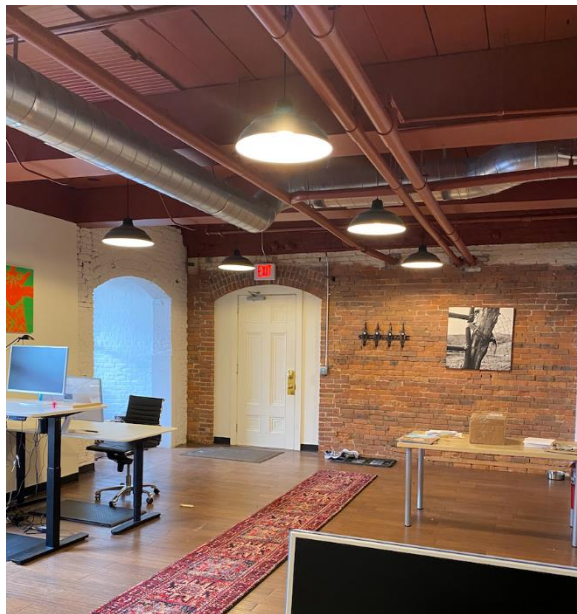
Office: 802.863.8218

Cell : 508.479.8761

Fax: 802.863.8219

[kkenney@vermontrealestate.com](mailto:kkenney@vermontrealestate.com)

[www.vermontrealestate.com](http://www.vermontrealestate.com)



INFORMATION HEREIN IS BELIEVED TO BE ACCURATE BUT IS NOT WARRANTED. ALL FIGURES AND INFORMATION SHOULD BE INDEPENDENTLY CONFIRMED. THIS FLYER IS NOT A LEGALLY BINDING OFFER TO SELL OR LEASE PROPERTY. PLEASE SEEK COMPETENT LEGAL AND FINANCIAL ADVICE. POMERLEAU REAL ESTATE REPRESENTS THE OWNER IN THIS TRANSACTION.



# One Lawson Lane, Suite 200 Burlington, VT

**Available Space: Various single offices**

**For Lease: \$400-\$650/ per office**

## Highlights:

- Single offices in second floor executive suite
- 3 Single offices currently available
- Suite offers shared waiting area, kitchenette, and conference room
- Private and quiet setting!

For additional information contact:

**Kendra Kenney**

Commercial Brokerage

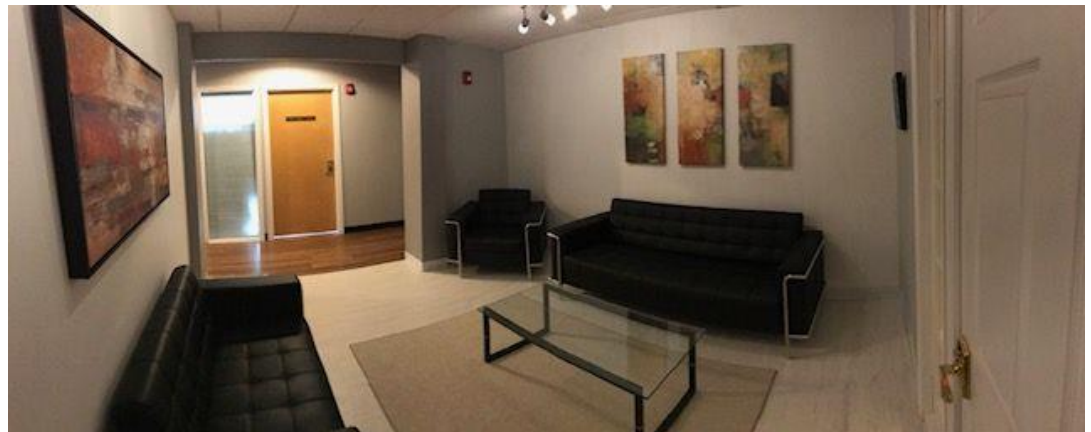
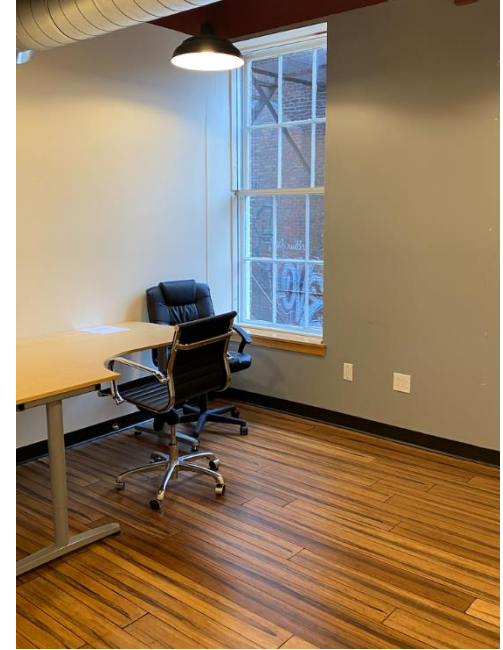
Office: 802.863.8218

Cell : 508.479.8761

Fax: 802.863.8219

[kkenney@vermontrealestate.com](mailto:kkenney@vermontrealestate.com)

[www.vermontrealestate.com](http://www.vermontrealestate.com)



INFORMATION HEREIN IS BELIEVED TO BE ACCURATE BUT IS NOT WARRANTED. ALL FIGURES AND INFORMATION SHOULD BE INDEPENDENTLY CONFIRMED. THIS FLYER IS NOT A LEGALLY BINDING OFFER TO SELL OR LEASE PROPERTY. PLEASE SEEK COMPETENT LEGAL AND FINANCIAL ADVICE. POMERLEAU REAL ESTATE REPRESENTS THE OWNER IN THIS TRANSACTION.



# One Lawson Lane, Salon Suite Burlington, VT

Available Space: 1,000 +/- sf

For Lease: \$2,100 / mo + utilities

## Highlights:

- Fully equipped hair salon available for rent January 1 in downtown Burlington!
- Conveniently located just one block from Church Street
- First floor suite
- Space features great natural light and exposed brick
- Showing by appointment only

For additional information contact:

**Kendra Kenney**

Commercial Brokerage

Office: 802.863.8218

Cell : 508.479.8761

Fax: 802.863.8219

[kkenney@vermontrealestate.com](mailto:kkenney@vermontrealestate.com)

[www.vermontrealestate.com](http://www.vermontrealestate.com)



INFORMATION HEREIN IS BELIEVED TO BE ACCURATE BUT IS NOT WARRANTED. ALL FIGURES AND INFORMATION SHOULD BE INDEPENDENTLY CONFIRMED. THIS FLYER IS NOT A LEGALLY BINDING OFFER TO SELL OR LEASE PROPERTY. PLEASE SEEK COMPETENT LEGAL AND FINANCIAL ADVICE. POMERLEAU REAL ESTATE REPRESENTS THE OWNER IN THIS TRANSACTION.