

171 Battery Street

Burlington, Vermont

POMERLEAU
REAL ESTATE



FOR LEASE: TWO SPACES AVAILABLE!



FOR MORE INFORMATION, CONTACT:

Kendra Kenney

O: 802 863 8218 | M: 508 479 8761 | kkenney@vermontrealestate.com

vermontrealestate.com

COMMERCIAL BROKERAGE | DEVELOPMENT | PROPERTY MANAGEMENT

FOR LEASE: Suite 1 (Ground Floor)

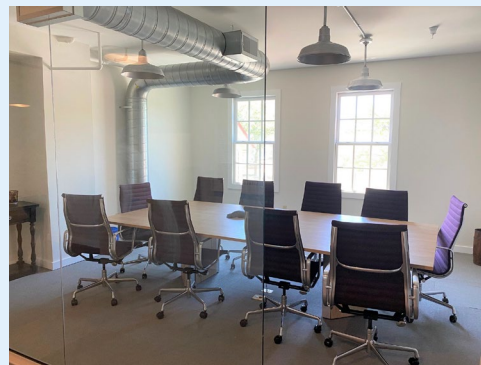
Size: 1,352 SF

Price: \$2,600/month + utilities!
(\$15/SF NNN estimated \$7.71/SF)

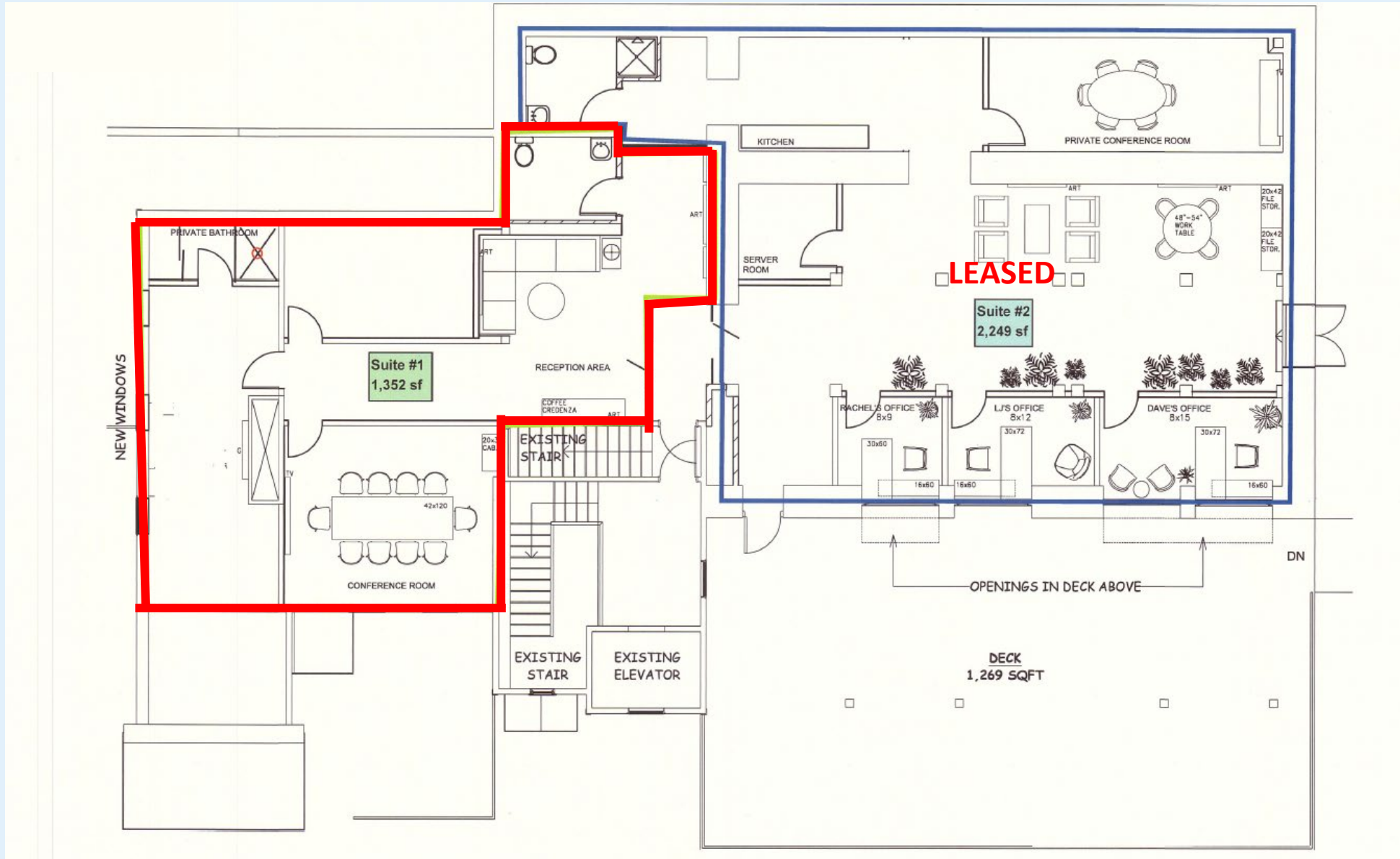
PROPERTY HIGHLIGHTS:

Rare Battery St office space available with lake views! The ground floor office was recently renovated to house high end offices with unique Vermont charm. Glass walls allow for so much natural light! The spaces offers a mix of open space and a private room, all taking advantage of the natural light flowing through the space.

Three on-site parking spaces included in lease!



Building Floor Plan: Ground Floor – Suite 1



171 Battery Street

Burlington, Vermont

POMERLEAU
REAL ESTATE

FOR LEASE: THE ANNEX

Size: 650 SF

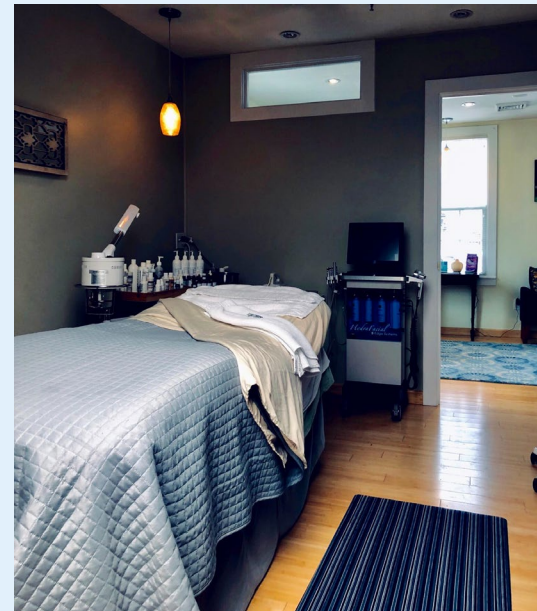
Price: \$1,565/month Gross

PROPERTY HIGHLIGHTS:

New Battery St office or retail space to be available this February! This space offers a private entrance via a large front deck right off Battery Street. Renovated in 2017, this suite features spacious reception area and one private office.

Two on-site parking spaces included in lease!

Available Feb 1, 2025!



Building Floor Plan: First Floor - Annex Space

