

# 65 Millet Street

Richmond, VT 05477



## TWO OFFICES AVAILABLE FOR LEASE:

### OFFICE ONE:

**SIZE:** 5,400 SF

**PRICE:** \$12/SF NNN

**Estimated CAM/Taxes \$3.40/SF**

### PROPERTY HIGHLIGHTS:

This spacious and bright office space, featuring skylights on the third floor, is now available for lease! The building provides extensive parking and is centrally located in the heart of Richmond, just steps from local businesses and restaurants.

Conveniently situated less than 2 miles from Interstate 89 (Exit 11), it offers easy access to major routes.



FOR MORE INFORMATION, CONTACT:

**Brad Worthen**

**O:** 802 992 9287 | **M:** 802 343 0861 | [bworthen@vermontrealestate.com](mailto:bworthen@vermontrealestate.com)

[vermontrealestate.com](http://vermontrealestate.com)

COMMERCIAL BROKERAGE | DEVELOPMENT | PROPERTY MANAGEMENT

# 65 Millet Street

Richmond, VT 05477

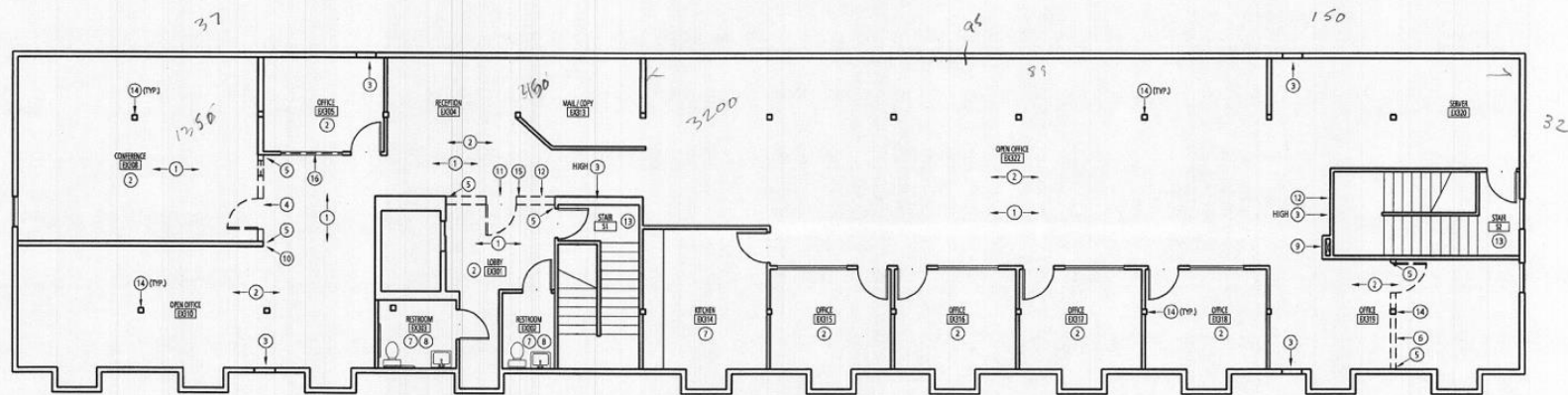
POMERLEAU  
REAL ESTATE





# 65 Millet Street

Richmond, VT 05477



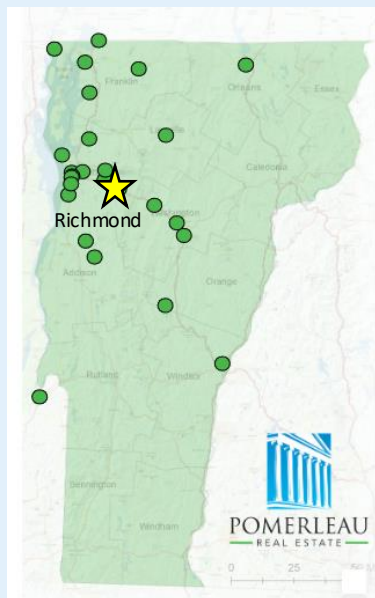
1 THIRD FLOOR PLAN  
Scale: 1/8" = 1'-0"



# 65 Millet Street

Richmond, VT 05477

POMERLEAU  
REAL ESTATE



**Pomerleau Real Estate**  
69 College Street  
Burlington, VT 05401

In partnership with:



*Information herein is believed to be accurate but is not warranted. All figures and information should be independently confirmed. This flyer is not a legally binding offer to sell or lease property. Please seek competent legal and financial advice. Pomerleau Real Estate represents the owner in this transaction.*



FOR MORE INFORMATION, CONTACT:

**Brad Worthen**

**O:** 802 992 9287 | **M:** 802 343 0861 | [bworthen@vermontrealestate.com](mailto:bworthen@vermontrealestate.com)

[vermontrealestate.com](http://vermontrealestate.com)

COMMERCIAL BROKERAGE | DEVELOPMENT | PROPERTY MANAGEMENT