

# 7 Green Tree Drive

South Burlington, Vermont



## Available Suite:

**SIZE:** 2,500 SF

**PRICE:** \$2,500/month CAM (\$780/month) plus utilities

Excellent opportunity for mixed use office/retail space with warehouse space included. Front entrance leads to an open area with two private rooms and a storage space. Rear of building has BLANK SF of warehouse space broken into three rooms. Space offers loading dock in the back of the building.

Great opportunity that won't last long!



FOR MORE INFORMATION, CONTACT:

**Kendra Kenney**

**O: 802 863 8218 | M: 508 479 8761 | [kkenney@vermontrealestate.com](mailto:kkenney@vermontrealestate.com)**

**[vermontrealestate.com](http://vermontrealestate.com)**

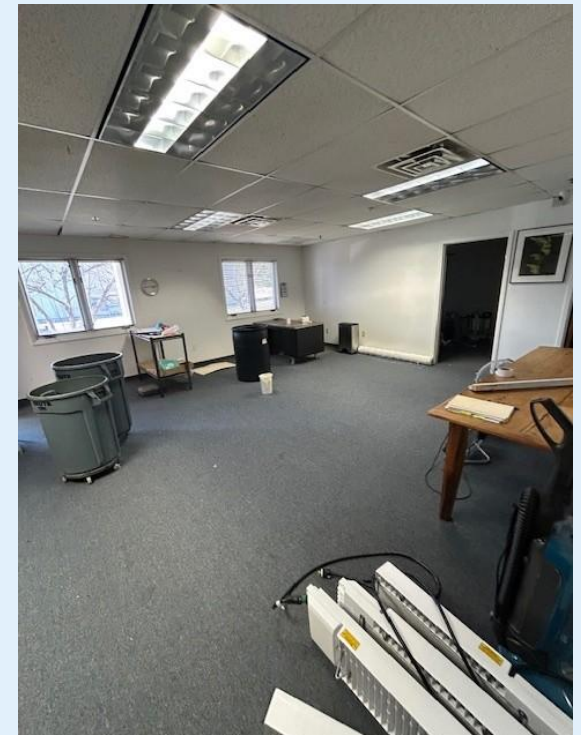
COMMERCIAL BROKERAGE | DEVELOPMENT | PROPERTY MANAGEMENT

# Mansfield Business Park

Day Lane, Williston, Vermont



## Photos:



FOR MORE INFORMATION, CONTACT:

**Kendra Kenney**

**O: 802 863 8218 | M: 508 479 8761 | [kkenney@vermontrealestate.com](mailto:kkenney@vermontrealestate.com)**

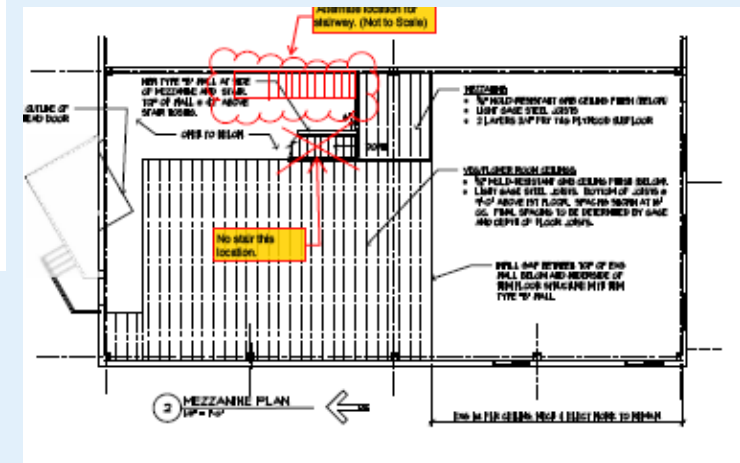
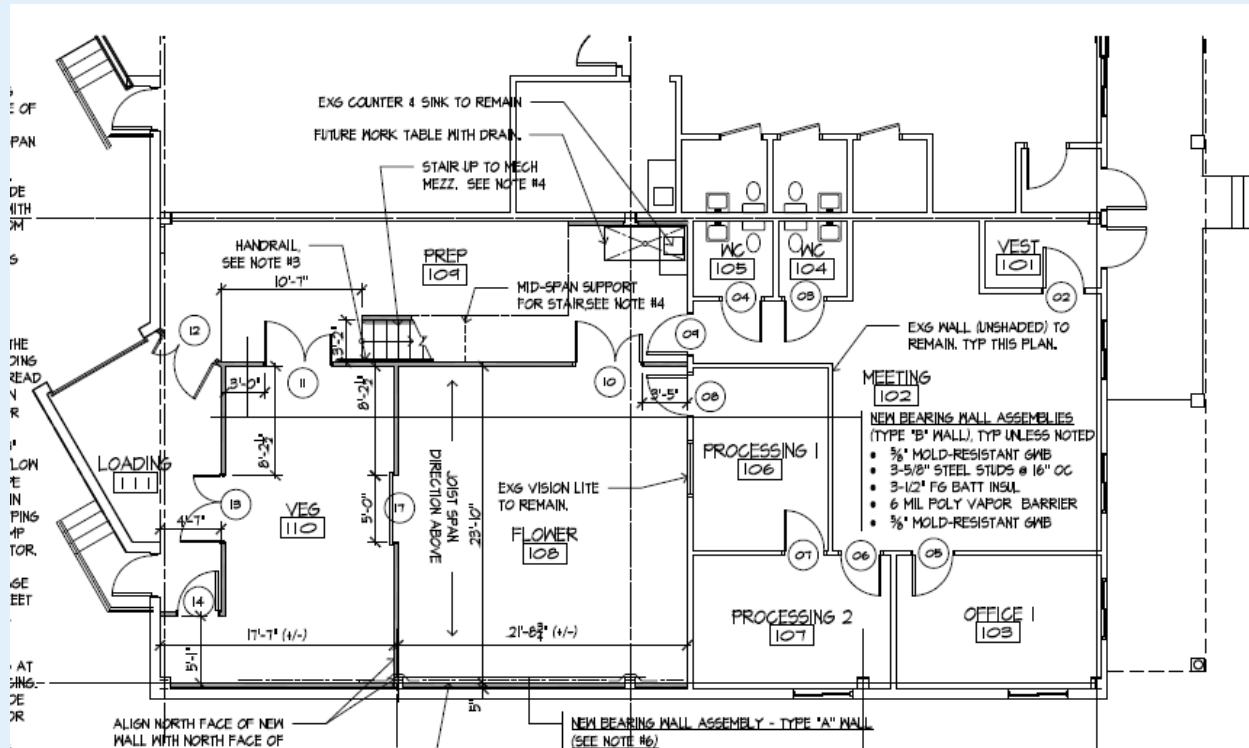
**[vermontrealestate.com](http://vermontrealestate.com)**

COMMERCIAL BROKERAGE | DEVELOPMENT | PROPERTY MANAGEMENT

# Mansfield Business Park

Day Lane, Williston, Vermont

## Floor Plans:



FOR MORE INFORMATION, CONTACT:

**Kendra Kenney**

O: 802 863 8218 | M: 508 479 8761 | kkenney@vermontrealestate.com

[vermontrealestate.com](http://vermontrealestate.com)

COMMERCIAL BROKERAGE | DEVELOPMENT | PROPERTY MANAGEMENT